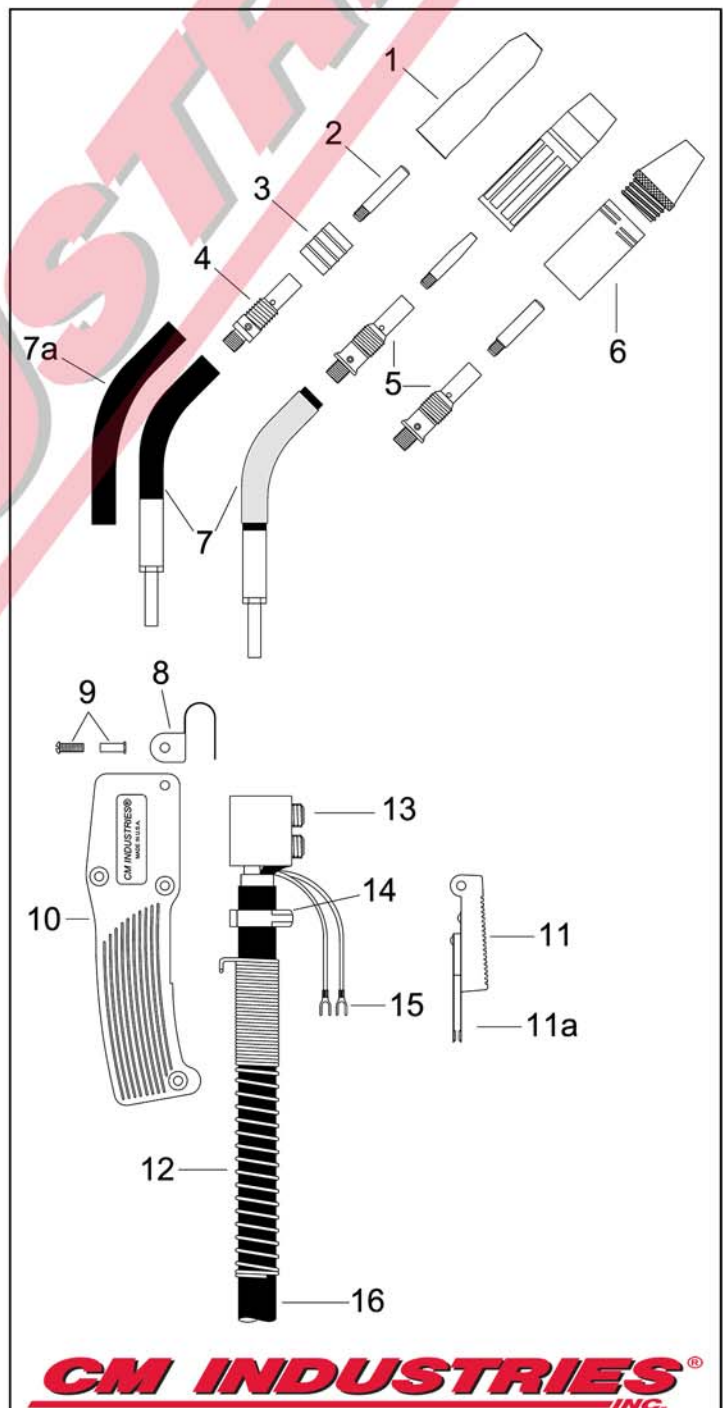


# TWC 200 & 250 AIR-COOLED MIG GUN

Replacement Suitable for Tweco®

RATING	GUN ORDERING PART NUMBER		GUN PLUG Direct Connect
	200A	250A	
<b>200-250 Amp CO2 @ 80% Duty Cycle</b>  <b>160 Amp Mixed Gas @ 80% Duty Cycle</b>  <b>Wire Capacity: 0.023" (0.6mm) - 0.045" (1.2mm)</b>	C2xx-3035	C250-3035-xx	<b>Tweco® #4</b> <b>Century®</b> <b>Euro</b> <b>Hobart®</b> <b>Lincoln® "LN"</b> <b>Lincoln® W.M./Power MIG®</b> <b>Miller®</b> <b>Panasonic®</b>
	CC2xx-3035	CC250-3035-xx	
	CX2xx-3035	CX250-3035-xx	
	CH2xx-3035	CH250-3035-xx	
	CL2xx-3035	CL250-3035-xx	
	CLPM2xx-3035	CLPM250-3035-xx	
	CM2xx-3035	CM250-3035-xx	
CP2xx-3035	CP250-3035-xx		
xx = Standard lengths of 10, 12, 15, 20 and 25 ft. Custom lengths also available.			

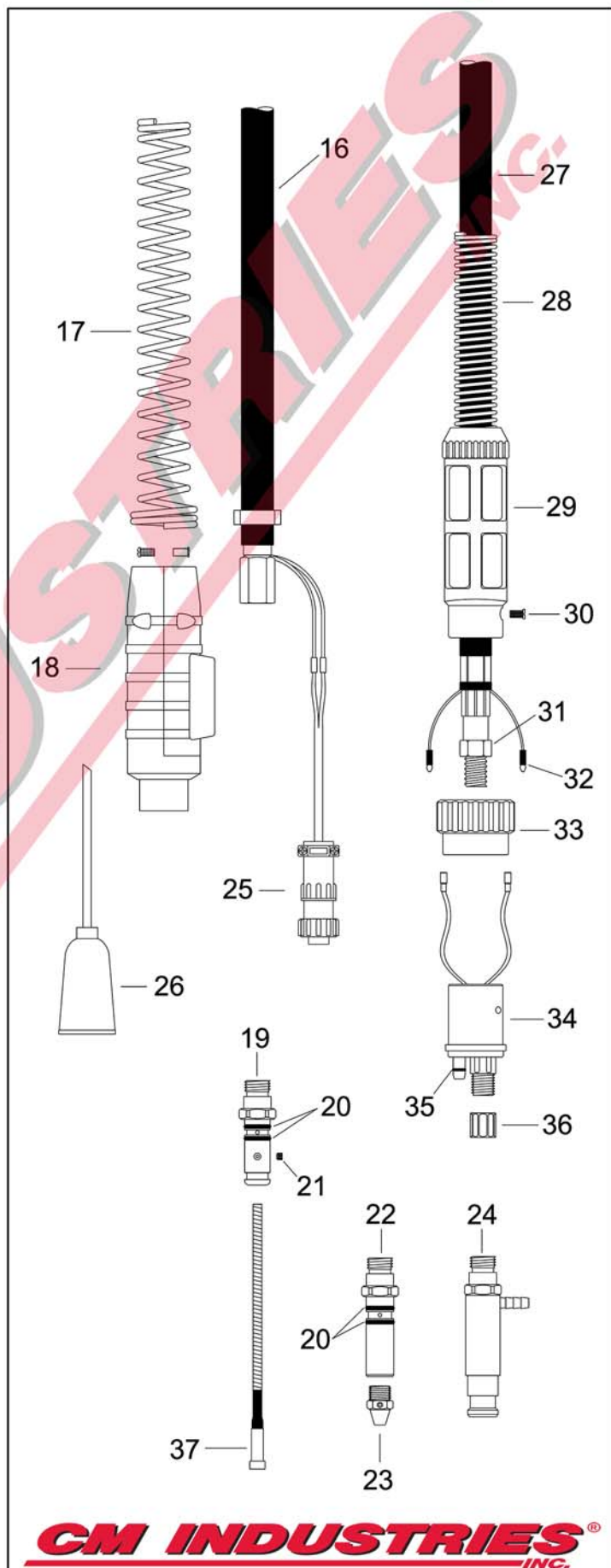
#	Part Number	Description	
1.	C22-37	Nozzle, 3/8" I.D. Adjustable	
	C22-50	Nozzle, 1/2" I.D. Adjustable, Std.	
	C22-62	Nozzle, 5/8" I.D. Adjustable	
	C22-37-SS	Nozzle, 3/8" I.D. Short Stop	
	C22-50-SS	Nozzle, 1/2" I.D. Short Stop	
	C22-62-SS	Nozzle, 5/8" I.D. Short Stop	
	C22T-37-SS	Nozzle, Tapered, 3/8" I.D. Short Stop	
	C23-37	Nozzle, Self Insulated, 3/8" I.D.	
	C23-50	Nozzle, Self Insulated, 1/2" I.D.	
	C23-62	Nozzle, Self Insulated, 5/8" I.D.	
	C23-75	Nozzle, Self Insulated, 5/8" I.D.	
	C23T-37	Nozzle, Tapered, Self Insulated, 3/8" I.D.	
	C24CT-37-S	Nozzle, Coarse Thread, 3/8" I.D.	
	C24CT-50-S	Nozzle, Coarse Thread, 1/2" I.D.	
	C24CT-62-S	Nozzle, Coarse Thread, 5/8" I.D.	
	C24CT-75-S	Nozzle, Coarse Thread, 3/4" I.D.	
	2.	C14-23	Contact Tip, .023" 0.6mm
C14-30		Contact Tip, .030" 0.8mm	
C14-35		Contact Tip, .035" 0.9mm, Std.	
C14-40		Contact Tip, .040" 1.0mm	
C14-45		Contact Tip, .045" 1.2mm	
C14A-364		Contact Tip, Aluminum, 3/64"	
C14H-35		Contact Tip, H.D., .035" 0.9mm	
C14H-40		Contact Tip, H.D., .040" 1.0mm	
C14H-45		Contact Tip, H.D., .045" 1.2mm	
C14AH-364		Contact Tip, H.D., Aluminum, 3/64"	
3.	C32	Nozzle Insulator, Std.	
	4.	C52	Gas Diffuser, Std.
		C52FN	Gas Diffuser for Fixed Nozzle
	5.	C34CT	Nozzle Insulator
	7.	C62A-45	Conductor Tube, 45°, 200A
		C62A-60	Conductor Tube, 60°, 200A
C62J-45		Conductor Tube, Jacketed, 45°, 250A	
C62J-60		Conductor Tube, Jacketed, 60°, 250A	
7a.		C72A	Neoprene Insulation



**CM INDUSTRIES®**  
INC.

COPYRIGHT © 2015 CM INDUSTRIES, INC. ALL RIGHTS RESERVED

#	Part Number	Description
8.	C152	Gun Hanger
9.	C122FM	Binder Screw & Post
10.	C83	Handle
11.	C92	Trigger Switch Assembly
11a.	C92C	Replacement Trigger Blades
12.	C142-6S	Cable Support Spring
13.	C102	Cable Connector Block Assembly
14.	C134-16	Power Cable Clamp
15.	C244	Control Wire Terminal
16.	C200-10 C200-12 C200-15 C200-20 C200-25	Power Cable, 10' Power Cable, 12' Power Cable, 15' Power Cable, 20' Power Cable, 25'
17.	C350R-230-10S	Cable Support Spring
18.	CR6RC	Round Connector Case
19.	C350-174H	Gun Plug, Tweco
20.	C224	O-Ring
21.	C44C	Set Screw
22.	C350-174MH	Gun Plug, Miller
23.	C174M-N	Conduit Nut, Miller
24.	C350-174LH	Gun Plug, Lincoln
25.	300-05-001	Electrical Plug, Miller & Lincoln Power MIG
26.	300-05-002	Electrical Plug, Lincoln LN & LF
27.	C200-10E C200-12E C200-15E C200-20E C200-25E	Euro Power Cable, 10' Euro Power Cable, 12' Euro Power Cable, 15' Euro Power Cable, 20' Euro Power Cable, 25'
28.	185-26-001	Cable Support Spring
29.	260-25-002	Adaptor Support, Euro
30.	285-01-001	Adaptor Support Screw
31.	290-01-012	Hex Nut, M12
32.	300-05-010	Male Terminal
33.	C174X-2	Adaptor Nut
34.	C174EX-1	Euro-Kwik Adaptor Assembly
35.	C174EX-1G	O-Ring, Euro
36.	C174EX-1C	Conduit Nut, Euro-Kwik
37.	C42-23-15 C42-3035-15 C42-3035-25 C42-4045-15 C42-4045-25 C42N-3545-15	Liner Assembly, 15', .023" Liner Assembly, 15', .030"-.035", Std. Liner Assembly, 25', .030"-.035" Liner Assembly, 15', .040"-.045" Liner Assembly, 25', .040"-.045" Nylon Liner Assembly, 15', .035"-.045"





# WARNING!

## Please read all Safety Instructions



# WARNING

- Read and follow the manufacturer's instructions, employer's safety practices, and Material Safety Data Sheets (MSDSs).
- Only qualified personnel should install, use, or service this material and/or equipment.



**ELECTRIC SHOCK can kill.**

- Always wear dry insulating gloves.
- Do not touch live electrical parts.
- Always disconnect power source before hooking up or changing electrodes, nozzles and other parts.



**WELDING SPARKS can cause fire or explosion**

- Do not weld near flammable material.
- Do not weld on closed containers.
- Remove combustibles from the work area and/or provide a fire watch.
- Avoid oily or greasy clothing as a spark may ignite them.



**LOUD NOISE can damage hearing.**

- Always wear protective hearing devices to ensure protection when noise levels exceed OSHA standards.



**ARC RAYS can injure eyes and burn skin.**

- Always wear correct eye, ear, and body protection.
- Always wear a welding helmet with the proper grade filter lens. Protect yourself and others from spatter arc rays by using protective screens, barriers and welding curtains.
- Always wear protective gloves and clothing to cover exposed skin. This will aid in the prevention of arc and spatter burns.



**FUMES AND GASES can be hazardous to your health.**

- Keep your head out of the fumes.
- Use enough ventilation or exhaust at the arc to keep fumes and gases from your breathing zone, and general area.
- Fumes from cutting and welding can deplete air quality, causing injury or death. Always wear an air supplied respirator in confined areas, or if breathing air is not safe.

Read American National Standard Z49.1, "Safety in Welding, Cutting, and Allied Processes," available from American Welding Society, 550 N.W. LeJeune Rd., Miami, FL 33126;  
 OSHA Safety and health standards, available from U.S. Government Printing Office, Washington DC 20402

**CM INDUSTRIES<sup>®</sup>**  
**INC.**

505 OAKWOOD RD. LAKE ZURICH, IL 60047 USA  
 PHONE: 847-550-0033 FAX: 847-550-0444  
[www.cmindustries.com](http://www.cmindustries.com)